

Weekly Rhythm Assignments

Medium



smartmusic®

Rhythm Exercise 1 (6216)

Quarter Note = 88 or faster

Rhythm Exercise 2 (6220)

Quarter Note = 88 or faster

Rhythm Exercise 3 (6228)

Quarter Note = 88 or faster

Rhythm Exercise 4 (6230)

Quarter Note = 88 or faster

Rhythm Exercise 5 (6232)

Quarter Note = 88 or faster

Two staves of music in 4/4 time. The first staff contains four measures: a quarter note, a quarter rest, a quarter rest, a quarter note, an eighth note, an eighth note, a quarter note, a quarter rest, a quarter note, an eighth note, an eighth note, a quarter note, a quarter rest, a quarter rest, a quarter note, and a quarter note. The second staff contains four measures: an eighth note, an eighth note, a quarter note, a quarter note, an eighth note, an eighth note, a quarter note, a quarter note, an eighth note, an eighth note, a quarter note, a quarter note, an eighth note, an eighth note, a quarter note, and a quarter note.

Rhythm Exercise 6 (6234)

Quarter Note = 88 or faster

Two staves of music in 4/4 time. The first staff contains four measures: an eighth note, an eighth note, a quarter note, a quarter note, an eighth note, an eighth note, a quarter note, a quarter note, an eighth note, an eighth note, a quarter note, a quarter note, an eighth note, an eighth note, a quarter note, and a quarter note. The second staff contains four measures: an eighth note, an eighth note, a quarter note, a quarter note, an eighth note, an eighth note, a quarter note, a quarter note, an eighth note, an eighth note, a quarter note, a quarter note, an eighth note, an eighth note, a quarter note, and a quarter note.

Rhythm Exercise 7 (6236)

Quarter Note = 88 or faster

Two staves of music in 4/4 time. The first staff contains four measures: a quarter note, a quarter note, a quarter note, a quarter note, a quarter note, a quarter note, a quarter note, a quarter note, a quarter note, a quarter note, a quarter note, a quarter note, a quarter note, a quarter note, a quarter note, and a quarter note. The second staff contains four measures: a quarter note, a quarter note, a quarter note, a quarter note, a quarter note, a quarter note, a quarter note, a quarter note, a quarter note, a quarter note, a quarter note, a quarter note, a quarter note, a quarter note, a quarter note, and a quarter note.

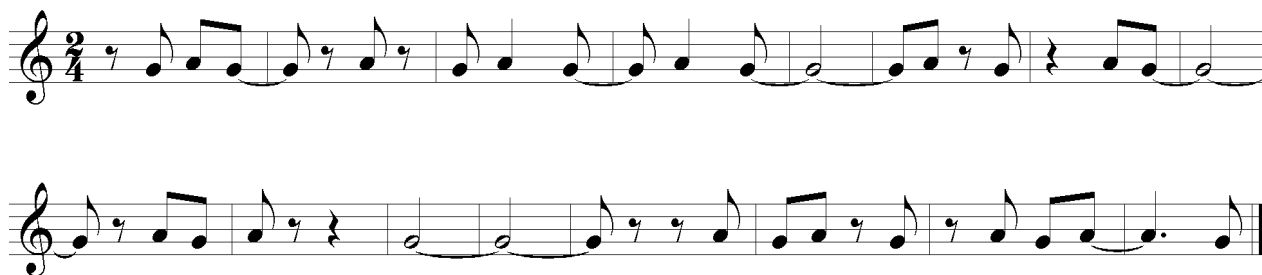
Rhythm Exercise 8 (6244)

Quarter Note = 88 or faster

Two staves of music in 2/4 time. The first staff contains four measures: a quarter note, a quarter note, a quarter note, a quarter note, a quarter note, a quarter note, a quarter note, a quarter note, a quarter note, a quarter note, a quarter note, a quarter note, a quarter note, a quarter note, a quarter note, and a quarter note. The second staff contains four measures: a quarter note, a quarter note, a quarter note, a quarter note, a quarter note, a quarter note, a quarter note, a quarter note, a quarter note, a quarter note, a quarter note, a quarter note, a quarter note, a quarter note, a quarter note, and a quarter note.

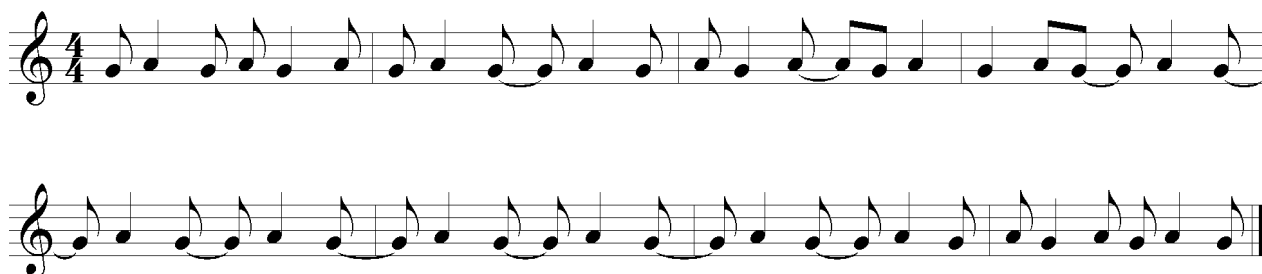
Rhythm Exercise 9 (6246)

Quarter Note = 88 or faster



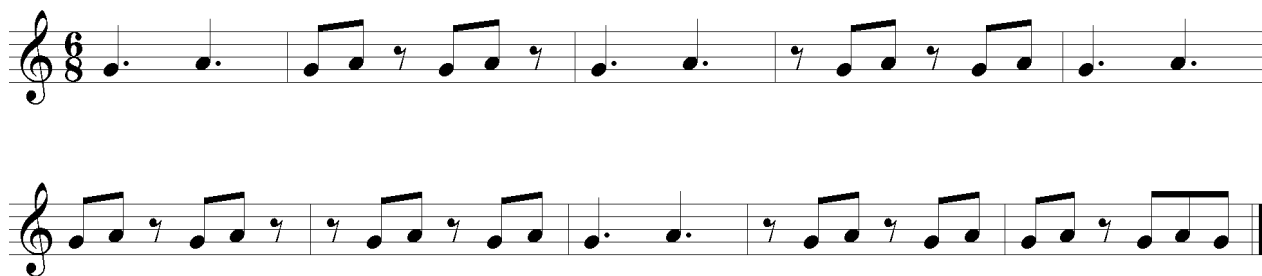
Rhythm Exercise 10 (6248)

Quarter Note = 88 or faster



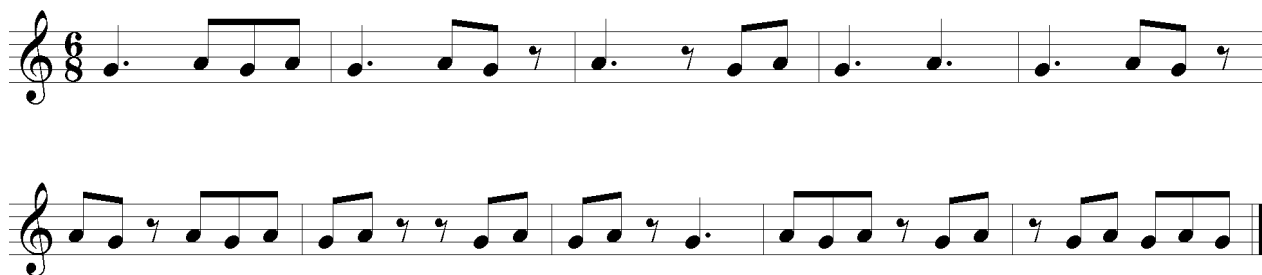
Rhythm Exercise 11 (6408)

Dotted Quarter Note = 60 or faster



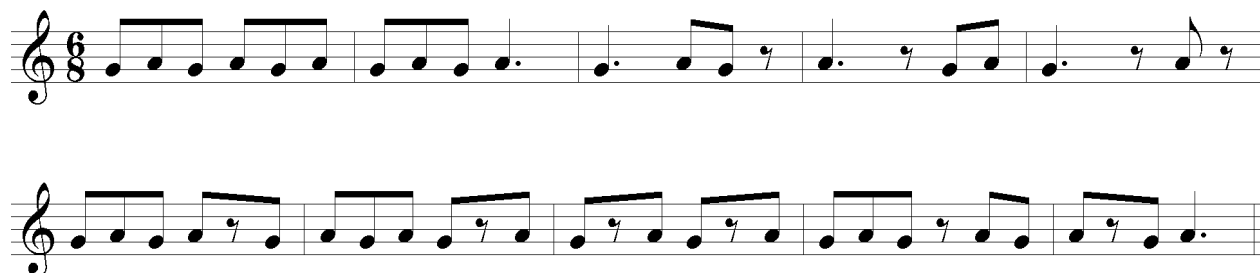
Rhythm Exercise 12 (6410)

Dotted Quarter Note = 60 or faster



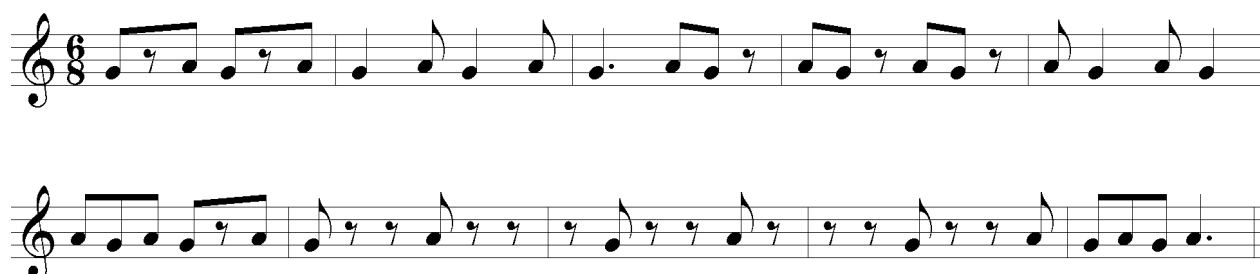
Rhythm Exercise 13 (6412)

Dotted Quarter Note = 60 or faster



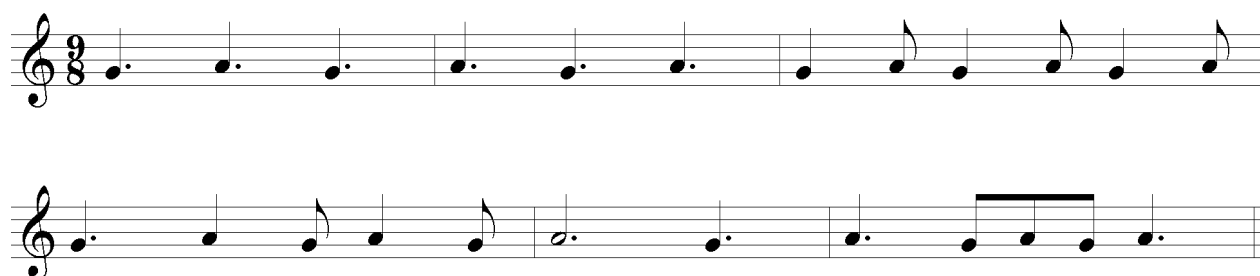
Rhythm Exercise 14 (6414)

Dotted Quarter Note = 60 or faster



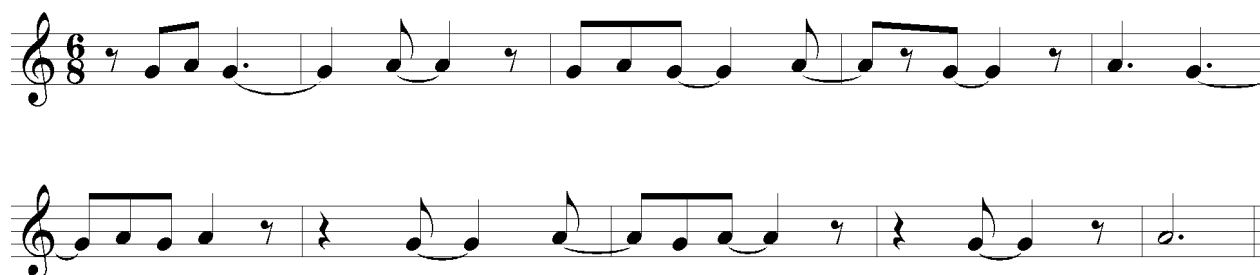
Rhythm Exercise 15 (6438)

Dotted Quarter Note = 60 or faster



Rhythm Exercise 16 (6424)

Dotted Quarter Note = 60 or faster



Rhythm Exercise 21 (6300)

Quarter Note = 66 or faster

Three staves of musical notation for Rhythm Exercise 21 (6300) in 2/4 time. The first staff contains measures 1-4: quarter, quarter, eighth-eighth, eighth-eighth, quarter, quarter, eighth-eighth, eighth-eighth, quarter, quarter, eighth-eighth, eighth-eighth. The second staff contains measures 5-8: eighth-eighth, eighth-eighth, eighth-eighth, eighth-eighth, quarter, quarter, eighth-eighth, eighth-eighth, quarter, quarter, eighth-eighth, eighth-eighth, quarter, quarter, eighth-eighth, eighth-eighth. The third staff contains measures 9-12: eighth-eighth, eighth-eighth, eighth-eighth, eighth-eighth, quarter, quarter, eighth-eighth, eighth-eighth, quarter, quarter, eighth-eighth, eighth-eighth, quarter, quarter, eighth-eighth, eighth-eighth.

Rhythm Exercise 22 (6302)

Quarter Note = 66 or faster

Three staves of musical notation for Rhythm Exercise 22 (6302) in 2/4 time. The first staff contains measures 1-4: quarter, quarter, eighth-eighth, eighth-eighth, quarter, quarter, eighth-eighth, eighth-eighth, quarter, quarter, eighth-eighth, eighth-eighth. The second staff contains measures 5-8: quarter, quarter, eighth-eighth, eighth-eighth, quarter, quarter, eighth-eighth, eighth-eighth, quarter, quarter, eighth-eighth, eighth-eighth, quarter, quarter, eighth-eighth, eighth-eighth. The third staff contains measures 9-12: quarter, quarter, eighth-eighth, eighth-eighth, quarter, quarter, eighth-eighth, eighth-eighth, quarter, quarter, eighth-eighth, eighth-eighth, quarter, quarter, eighth-eighth, eighth-eighth.

Rhythm Exercise 23 (6304)

Quarter Note = 66 or faster

Three staves of musical notation for Rhythm Exercise 23 (6304) in 2/4 time. The first staff contains measures 1-4: eighth-eighth, eighth-eighth, eighth-eighth, eighth-eighth, quarter, quarter, eighth-eighth, eighth-eighth, quarter, quarter, eighth-eighth, eighth-eighth. The second staff contains measures 5-8: eighth-eighth, eighth-eighth, eighth-eighth, eighth-eighth, quarter, quarter, eighth-eighth, eighth-eighth, quarter, quarter, eighth-eighth, eighth-eighth, quarter, quarter, eighth-eighth, eighth-eighth. The third staff contains measures 9-12: eighth-eighth, eighth-eighth, eighth-eighth, eighth-eighth, quarter, quarter, eighth-eighth, eighth-eighth, quarter, quarter, eighth-eighth, eighth-eighth, quarter, quarter, eighth-eighth, eighth-eighth.

Rhythm Exercise 24 (6306) Quarter Note = 66 or faster

Three staves of musical notation for Rhythm Exercise 24 (6306). The first staff contains five measures of eighth-note patterns. The second staff begins with a quarter rest followed by four measures of eighth-note patterns. The third staff begins with an eighth-note pattern, followed by a quarter rest, and then four measures of eighth-note patterns.

Rhythm Exercise 25 (6308) Quarter Note = 66 or faster

Three staves of musical notation for Rhythm Exercise 25 (6308). The first staff contains five measures of eighth-note patterns. The second staff contains five measures of eighth-note patterns. The third staff begins with an eighth-note pattern, followed by a quarter rest, and then four measures of eighth-note patterns.

Rhythm Exercise 26 (6310) Quarter Note = 66 or faster

Three staves of musical notation for Rhythm Exercise 26 (6310). The first staff contains five measures of eighth-note patterns. The second staff contains five measures of eighth-note patterns. The third staff contains five measures of eighth-note patterns.

Rhythm Exercise 27 (6312)

Quarter Note = 66 or faster

Three staves of musical notation for Rhythm Exercise 27 (6312) in 2/4 time. The first staff contains six measures of eighth-note patterns. The second staff contains six measures of eighth-note patterns. The third staff contains six measures of eighth-note patterns, ending with a whole note.

Rhythm Exercise 28 (6330)

Quarter Note = 66 or faster

Three staves of musical notation for Rhythm Exercise 28 (6330) in 2/4 time. The first staff contains six measures of eighth-note patterns. The second staff contains six measures of eighth-note patterns. The third staff contains six measures of eighth-note patterns.

Rhythm Exercise 29 (6324)

Quarter Note = 66 or faster

Two staves of musical notation for Rhythm Exercise 29 (6324) in 2/4 time. The first staff contains eight measures of eighth-note patterns, including a measure with a quarter rest. The second staff contains eight measures of eighth-note patterns.

Rhythm Exercise 30 (6332)

Quarter Note = 66 or faster

The image shows two staves of musical notation for Rhythm Exercise 30 (6332). The first staff is in 4/4 time and contains 16 measures. The first four measures consist of continuous eighth-note runs. The fifth measure is a quarter rest, followed by a quarter note on the next staff. The sixth measure is a quarter rest, followed by a quarter note on the next staff. The seventh measure is a quarter rest, followed by a quarter note on the next staff. The eighth measure is a quarter rest, followed by a quarter note on the next staff. The ninth measure is a quarter rest, followed by a quarter note on the next staff. The tenth measure is a quarter rest, followed by a quarter note on the next staff. The eleventh measure is a quarter rest, followed by a quarter note on the next staff. The twelfth measure is a quarter rest, followed by a quarter note on the next staff. The thirteenth measure is a quarter rest, followed by a quarter note on the next staff. The fourteenth measure is a quarter rest, followed by a quarter note on the next staff. The fifteenth measure is a quarter rest, followed by a quarter note on the next staff. The sixteenth measure is a quarter rest, followed by a quarter note on the next staff. The second staff continues the exercise with 16 measures. The first four measures consist of continuous eighth-note runs. The fifth measure is a quarter note, followed by a quarter note on the next staff. The sixth measure is a quarter note, followed by a quarter note on the next staff. The seventh measure is a quarter note, followed by a quarter note on the next staff. The eighth measure is a quarter note, followed by a quarter note on the next staff. The ninth measure is a quarter note, followed by a quarter note on the next staff. The tenth measure is a quarter note, followed by a quarter note on the next staff. The eleventh measure is a quarter note, followed by a quarter note on the next staff. The twelfth measure is a quarter note, followed by a quarter note on the next staff. The thirteenth measure is a quarter note, followed by a quarter note on the next staff. The fourteenth measure is a quarter note, followed by a quarter note on the next staff. The fifteenth measure is a quarter note, followed by a quarter note on the next staff. The sixteenth measure is a quarter note, followed by a quarter note on the next staff.