

Piccolo Part 1

# Christmas Carol Collection #2

Frosty the Snowman

$\text{♩} = 120$

Musical notation for the first staff of 'Frosty the Snowman'. It begins with a treble clef and a 4/4 time signature. The melody starts with a quarter rest, followed by a quarter note G4, a quarter note A4, and a quarter note B4. The piece concludes with a double bar line and repeat dots. A box containing the number '1.' is positioned above the final measure.

To Coda

1.

Musical notation for the second staff of 'Frosty the Snowman'. It begins with a treble clef and a 4/4 time signature. The melody starts with a quarter rest, followed by a quarter note G4, a quarter note A4, and a quarter note B4. The piece concludes with a double bar line and repeat dots. A box containing the number '2.' is positioned above the first measure, and a box containing the number '11' is positioned above the eleventh measure. The text 'D.C. al Coda' is written above the final measure.

D.C. al Coda

Musical notation for the third staff of 'Frosty the Snowman'. It begins with a treble clef and a 4/4 time signature. The melody starts with a quarter rest, followed by a quarter note G4, a quarter note A4, and a quarter note B4. The piece concludes with a double bar line and repeat dots. A box containing the number '21' is positioned above the first measure. The text 'CODA' is written above the first measure. The key signature changes to B-flat major (two flats) and the time signature changes to 4/4.

♠ CODA

21

1 Rudolph the Red-nosed Reindeer

Musical notation for the first staff of 'Rudolph the Red-nosed Reindeer'. It begins with a treble clef and a 4/4 time signature. The melody starts with a quarter rest, followed by a quarter note G4, a quarter note A4, and a quarter note B4. The piece concludes with a double bar line and repeat dots. A box containing the number '1.' is positioned above the final measure.

1.

Musical notation for the second staff of 'Rudolph the Red-nosed Reindeer'. It begins with a treble clef and a 4/4 time signature. The melody starts with a quarter rest, followed by a quarter note G4, a quarter note A4, and a quarter note B4. The piece concludes with a double bar line and repeat dots. A box containing the number '2.' is positioned above the first measure, and a box containing the number '11' is positioned above the eleventh measure.

11

Musical notation for the third staff of 'Rudolph the Red-nosed Reindeer'. It begins with a treble clef and a 4/4 time signature. The melody starts with a quarter rest, followed by a quarter note G4, a quarter note A4, and a quarter note B4. The piece concludes with a double bar line and repeat dots. A box containing the number '19' is positioned above the first measure.

19

Flute Part 1

# Christmas Carol Collection #2

Frosty the Snowman

$\text{♩} = 120$

Musical notation for the first staff of 'Frosty the Snowman'. It begins with a treble clef, a key signature of one flat (B-flat), and a 4/4 time signature. The tempo is marked as quarter note = 120. The melody starts with a quarter rest, followed by a quarter note G4, a quarter note A4, and a quarter note B4. The staff ends with a double bar line and repeat dots, with a first ending bracket above the final two notes (G4 and A4).

To Coda

First ending bracket for 'Frosty the Snowman', labeled '1.' above the bracket.

9

Musical notation for the second staff of 'Frosty the Snowman'. It begins with a treble clef, a key signature of one flat, and a 4/4 time signature. The melody continues from the first staff. A second ending bracket labeled '2.' spans the first two measures. A measure rest is followed by a measure containing a boxed number '11'. The staff ends with a double bar line and repeat dots, with a first ending bracket above the final two notes (G4 and A4). The text 'D.C. al Coda' is written above the final measure.

D.C. al Coda

19 CODA

Musical notation for the third staff of 'Frosty the Snowman', the Coda section. It begins with a treble clef, a key signature of one flat, and a 4/4 time signature. A measure rest is followed by a measure containing a boxed number '21'. The staff ends with a double bar line and repeat dots, with a first ending bracket above the final two notes (G4 and A4).

1

Rudolph the Red-nosed Reindeer

Musical notation for the first staff of 'Rudolph the Red-nosed Reindeer'. It begins with a treble clef, a key signature of two flats (B-flat and E-flat), and a 4/4 time signature. The melody starts with a quarter note G3, a quarter note A3, a quarter note B3, and a quarter note C4. The staff ends with a double bar line and repeat dots, with a first ending bracket above the final two notes (B3 and C4).

First ending bracket for 'Rudolph the Red-nosed Reindeer', labeled '1.' above the bracket.

9

Musical notation for the second staff of 'Rudolph the Red-nosed Reindeer'. It begins with a treble clef, a key signature of two flats, and a 4/4 time signature. The melody continues from the first staff. A second ending bracket labeled '2.' spans the first two measures. A measure rest is followed by a measure containing a boxed number '11'. The staff ends with a double bar line and repeat dots, with a first ending bracket above the final two notes (B3 and C4).

18

Musical notation for the third staff of 'Rudolph the Red-nosed Reindeer'. It begins with a treble clef, a key signature of two flats, and a 4/4 time signature. A measure rest is followed by a measure containing a boxed number '19'. The staff ends with a double bar line and repeat dots, with a first ending bracket above the final two notes (B3 and C4).

19

Clarinet Part 1

# Christmas Carol Collection #2

Frosty the Snowman

$\text{♩} = 120$

Musical notation for the first system of "Frosty the Snowman". It is in G major (one sharp) and 4/4 time. The melody starts with a quarter note G, followed by quarter notes A, B, and C. The next measure has a half note D, then quarter notes E, F, and G. The third measure has quarter notes A, B, and C, followed by a half note D. The fourth measure has quarter notes E, F, and G, followed by a half note A. The fifth measure has quarter notes B, C, and D, followed by a half note E. The sixth measure has quarter notes F, G, and A, followed by a half note B. The seventh measure has quarter notes C, B, and A, followed by a half note G. The eighth measure has quarter notes F, E, and D, followed by a half note C. A first ending bracket spans the last two measures, ending with a double bar line and repeat dots.

To Coda

1.

9

Musical notation for the second system of "Frosty the Snowman", measures 9-18. It continues the melody from the previous system. Measure 9 has quarter notes A, B, and C, followed by a half note D. Measure 10 has quarter notes E, F, and G, followed by a half note A. Measure 11 has quarter notes B, C, and D, followed by a half note E. Measure 12 has quarter notes F, G, and A, followed by a half note B. Measure 13 has quarter notes C, B, and A, followed by a half note G. Measure 14 has quarter notes F, E, and D, followed by a half note C. Measure 15 has quarter notes B, A, and G, followed by a half note F. Measure 16 has quarter notes E, D, and C, followed by a half note B. Measure 17 has quarter notes A, G, and F, followed by a half note E. Measure 18 has quarter notes D, C, and B, followed by a half note A. A second ending bracket spans measures 9-11, ending with a double bar line and repeat dots. A box containing the number "11" is placed above measure 11. The system ends with "D.C. al Coda" and a double bar line.

D.C. al Coda

19  $\text{♩}$  CODA

Musical notation for the third system of "Frosty the Snowman", measures 19-20. Measure 19 has quarter notes A, B, and C, followed by a half note D. Measure 20 has quarter notes E, F, and G, followed by a half note A. A box containing the number "21" is placed above measure 21. The system ends with a double bar line.

1 Rudolph the Red-nosed Reindeer

Musical notation for the first system of "Rudolph the Red-nosed Reindeer". It is in G major (one sharp) and 4/4 time. The melody starts with a quarter note G, followed by quarter notes A, B, and C. The next measure has a half note D, then quarter notes E, F, and G. The third measure has quarter notes A, B, and C, followed by a half note D. The fourth measure has quarter notes E, F, and G, followed by a half note A. The fifth measure has quarter notes B, C, and D, followed by a half note E. The sixth measure has quarter notes F, G, and A, followed by a half note B. The seventh measure has quarter notes C, B, and A, followed by a half note G. The eighth measure has quarter notes F, E, and D, followed by a half note C. A first ending bracket spans the last two measures, ending with a double bar line and repeat dots.

1.

9

Musical notation for the second system of "Rudolph the Red-nosed Reindeer", measures 9-18. It continues the melody from the previous system. Measure 9 has quarter notes A, B, and C, followed by a half note D. Measure 10 has quarter notes E, F, and G, followed by a half note A. Measure 11 has quarter notes B, C, and D, followed by a half note E. Measure 12 has quarter notes F, G, and A, followed by a half note B. Measure 13 has quarter notes C, B, and A, followed by a half note G. Measure 14 has quarter notes F, E, and D, followed by a half note C. Measure 15 has quarter notes B, A, and G, followed by a half note F. Measure 16 has quarter notes E, D, and C, followed by a half note B. Measure 17 has quarter notes A, G, and F, followed by a half note E. Measure 18 has quarter notes D, C, and B, followed by a half note A. A second ending bracket spans measures 9-11, ending with a double bar line and repeat dots. A box containing the number "11" is placed above measure 11.

18

Musical notation for the third system of "Rudolph the Red-nosed Reindeer", measures 19-18. Measure 19 has quarter notes A, B, and C, followed by a half note D. Measure 20 has quarter notes E, F, and G, followed by a half note A. Measure 21 has quarter notes B, C, and D, followed by a half note E. Measure 22 has quarter notes F, G, and A, followed by a half note B. Measure 23 has quarter notes C, B, and A, followed by a half note G. Measure 24 has quarter notes F, E, and D, followed by a half note C. Measure 25 has quarter notes B, A, and G, followed by a half note F. Measure 26 has quarter notes E, D, and C, followed by a half note B. Measure 27 has quarter notes A, G, and F, followed by a half note E. Measure 28 has quarter notes D, C, and B, followed by a half note A. A box containing the number "19" is placed above measure 19. The system ends with a double bar line.

Alto Sax Part 2

# Christmas Carol Collection #2

## Frosty the Snowman

$\text{♩} = 120$

To Coda

1.

Musical notation for the first system of 'Frosty the Snowman', measures 1 through 8. The key signature is two sharps (F# and C#) and the time signature is 4/4. The melody consists of quarter and eighth notes.

Musical notation for the second system of 'Frosty the Snowman', measures 9 through 18. It includes a first ending bracket (1.) and a second ending bracket (2.) with a repeat sign. A box containing the number '11' is placed above the staff. The text 'D.C. al Coda' is written at the end of the system.

Musical notation for the third system of 'Frosty the Snowman', measures 19 and 20. Measure 19 is marked with a double bar line and the word 'CODA'. A box containing the number '21' is placed above the staff. The system ends with a double bar line and a sharp sign.

## 1 Rudolph the Red-nosed Reindeer

1.

Musical notation for the first system of 'Rudolph the Red-nosed Reindeer', measures 1 through 8. The key signature is one sharp (F#) and the time signature is 4/4. The melody consists of quarter and eighth notes.

Musical notation for the second system of 'Rudolph the Red-nosed Reindeer', measures 9 through 17. It includes a first ending bracket (1.) and a second ending bracket (2.) with a repeat sign. A box containing the number '11' is placed above the staff.

Musical notation for the third system of 'Rudolph the Red-nosed Reindeer', measures 18 and 18. A box containing the number '19' is placed above the staff. The system ends with a double bar line.

Tenor Sax Part 3

# Christmas Carol Collection #2

## Frosty the Snowman

$\text{♩} = 120$

Musical notation for the first system of 'Frosty the Snowman'. It consists of a single staff in treble clef with a key signature of one sharp (F#) and a 4/4 time signature. The melody begins with a quarter rest, followed by quarter notes G4, A4, B4, and C5. The second measure contains quarter notes D5, E5, and F#5, followed by a quarter rest. The third measure has quarter notes G5, A5, and B5. The fourth measure has quarter notes C6, B5, and A5. The fifth measure has quarter notes G5, F#5, and E5. The sixth measure has quarter notes D5, C5, and B4. The seventh measure has quarter notes A4, G4, and F#4. The eighth measure has quarter notes E4, D4, and C4. A first ending bracket spans the final two measures, ending with a double bar line and repeat dots.

To Coda

1.

9

Musical notation for the second system of 'Frosty the Snowman', measures 9-18. It continues on a single staff. Measure 9 has quarter notes G4, A4, B4, and C5. Measure 10 has quarter notes D5, E5, and F#5, followed by a quarter rest. Measure 11 has quarter notes G5, A5, and B5. Measure 12 has quarter notes C6, B5, and A5. Measure 13 has quarter notes G5, F#5, and E5. Measure 14 has quarter notes D5, C5, and B4. Measure 15 has quarter notes A4, G4, and F#4. Measure 16 has quarter notes E4, D4, and C4. Measure 17 has quarter notes B3, A3, and G3. Measure 18 has quarter notes F#3, E3, and D3. A second ending bracket spans measures 9-10, and a first ending bracket spans measures 11-18, both ending with a double bar line and repeat dots.

D.C. al Coda

19

Musical notation for the third system of 'Frosty the Snowman', measures 19-21. It consists of a single staff. Measure 19 has quarter notes G4, A4, B4, and C5. Measure 20 has quarter notes D5, E5, and F#5, followed by a quarter rest. Measure 21 has quarter notes G5, A5, and B5. A first ending bracket spans measures 19-21, ending with a double bar line and repeat dots.

⊕ CODA

21

## 1 Rudolph the Red-nosed Reindeer

Musical notation for the first system of 'Rudolph the Red-nosed Reindeer'. It consists of a single staff in treble clef with a key signature of one sharp (F#) and a 4/4 time signature. The melody begins with quarter notes G4, A4, B4, and C5. The second measure contains quarter notes D5, E5, and F#5, followed by a quarter rest. The third measure has quarter notes G5, A5, and B5. The fourth measure has quarter notes C6, B5, and A5. The fifth measure has quarter notes G5, F#5, and E5. The sixth measure has quarter notes D5, C5, and B4. The seventh measure has quarter notes A4, G4, and F#4. The eighth measure has quarter notes E4, D4, and C4. A first ending bracket spans the final two measures, ending with a double bar line and repeat dots.

1.

9

Musical notation for the second system of 'Rudolph the Red-nosed Reindeer', measures 9-17. It continues on a single staff. Measure 9 has quarter notes G4, A4, B4, and C5. Measure 10 has quarter notes D5, E5, and F#5, followed by a quarter rest. Measure 11 has quarter notes G5, A5, and B5. Measure 12 has quarter notes C6, B5, and A5. Measure 13 has quarter notes G5, F#5, and E5. Measure 14 has quarter notes D5, C5, and B4. Measure 15 has quarter notes A4, G4, and F#4. Measure 16 has quarter notes E4, D4, and C4. Measure 17 has quarter notes B3, A3, and G3. A second ending bracket spans measures 9-10, and a first ending bracket spans measures 11-17, both ending with a double bar line and repeat dots.

11

18

Musical notation for the third system of 'Rudolph the Red-nosed Reindeer', measures 18-21. It consists of a single staff. Measure 18 has quarter notes B3, A3, and G3. Measure 19 has quarter notes F#3, E3, and D3. Measure 20 has quarter notes C4, B3, and A3. Measure 21 has quarter notes G3, F#3, and E3. A first ending bracket spans measures 18-21, ending with a double bar line and repeat dots.

19

Baritone Sax Part 4

# Christmas Carol Collection #2

Frosty the Snowman

$\text{♩} = 120$

To Coda

1.

Musical notation for Frosty the Snowman, measures 1-8. Treble clef, key signature of two sharps (F# and C#), 4/4 time signature. The melody consists of quarter notes and quarter rests.

9

2.

11

D.C. al Coda

Musical notation for Frosty the Snowman, measures 9-18. Treble clef, key signature of two sharps (F# and C#), 4/4 time signature. The melody continues with quarter notes and quarter rests, ending with a double bar line and repeat sign.

19

CODA

21

Musical notation for Frosty the Snowman, measures 19-21. Treble clef, key signature of two sharps (F# and C#), 4/4 time signature. The melody concludes with a double bar line and repeat sign.

1 Rudolph the Red-nosed Reindeer

1.

Musical notation for Rudolph the Red-nosed Reindeer, measures 1-8. Treble clef, key signature of one sharp (F#), 4/4 time signature. The melody consists of quarter notes and quarter rests.

9

2.

11

Musical notation for Rudolph the Red-nosed Reindeer, measures 9-18. Treble clef, key signature of one sharp (F#), 4/4 time signature. The melody continues with quarter notes and quarter rests, ending with a double bar line and repeat sign.

18

19

Musical notation for Rudolph the Red-nosed Reindeer, measures 18-19. Treble clef, key signature of one sharp (F#), 4/4 time signature. The melody concludes with a double bar line and repeat sign.

Trumpet 1 Part 1

Christmas Carol Collection #2

Frosty the Snowman

$\text{♩} = 120$

Musical notation for the first system of "Frosty the Snowman". It is in G major (one sharp) and 4/4 time. The melody begins with a quarter note G, followed by quarter notes A, B, and C. The first ending bracket spans from the eighth measure to the end of the system, with a first ending box containing the number "1".

Musical notation for the second system of "Frosty the Snowman". It starts at measure 9. The second ending bracket spans from the 11th measure to the end of the system, with a second ending box containing the number "11". The system concludes with the instruction "D.C. al Coda".

Musical notation for the third system of "Frosty the Snowman". It starts at measure 19 with a Coda symbol (⊕ CODA). The system ends with a double bar line and a Coda symbol. A box containing the number "21" is placed above the 21st measure.

1 Rudolph the Red-nosed Reindeer

Musical notation for the first system of "Rudolph the Red-nosed Reindeer". It is in G major (one sharp) and 4/4 time. The melody begins with a quarter note G, followed by quarter notes A, B, and C. The first ending bracket spans from the eighth measure to the end of the system, with a first ending box containing the number "1".

Musical notation for the second system of "Rudolph the Red-nosed Reindeer". It starts at measure 9. The second ending bracket spans from the 11th measure to the end of the system, with a second ending box containing the number "11".

Musical notation for the third system of "Rudolph the Red-nosed Reindeer". It starts at measure 18. A box containing the number "19" is placed above the 19th measure.

Trumpet 2 Part 2

# Christmas Carol Collection #2

$\text{♩} = 120$   
Frosty the Snowman

To Coda [1.]

9 [2.] [11] D.C. al Coda

19 CODA [21]

1 Rudolph the Red-nosed Reindeer [1.]

9 [2.] [11]

18 [19]



Trumpet 3 Part 3

# Christmas Carol Collection #2

$\text{♩} = 120$   
Frosty the Snowman

To Coda 1.

9 2. 11 D.C. al Coda

19 CODA 21

1 Rudolph the Red-nosed Reindeer 1.

9 2. 11

18 19

Trumpet 4 Part 4

Christmas Carol Collection #2

Frosty the Snowman

$\text{♩} = 120$

To Coda

1.

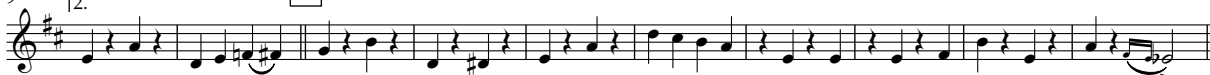


9

2.

11

D.C. al Coda



19 ⊕ CODA

21



1 Rudolph the Red-nosed Reindeer

1.



9

2.

11



18

19



Horn in F Part 2

# Christmas Carol Collection #2

## Frosty the Snowman

$\text{♩} = 120$

To Coda

1.

Musical notation for the first system of 'Frosty the Snowman' in G major, 4/4 time. It consists of measures 1 through 8. The melody begins with a quarter note G4, followed by quarter notes A4, B4, and C5. The piece concludes with a double bar line and repeat dots.

Musical notation for the second system of 'Frosty the Snowman' in G major, 4/4 time. It consists of measures 9 through 18. Measure 9 is the start of the second ending. Measure 11 is marked with a square box containing the number '11'. The system ends with the instruction 'D.C. al Coda'.

Musical notation for the third system of 'Frosty the Snowman' in G major, 4/4 time. It consists of measures 19 and 20. Measure 19 is marked with a square box containing the number '21'. The system concludes with a Coda symbol and a double bar line.

## 1 Rudolph the Red-nosed Reindeer

1.

Musical notation for the first system of 'Rudolph the Red-nosed Reindeer' in F major, 4/4 time. It consists of measures 1 through 8. The melody begins with a quarter note F4, followed by quarter notes G4, A4, and B4. The piece concludes with a double bar line and repeat dots.

Musical notation for the second system of 'Rudolph the Red-nosed Reindeer' in F major, 4/4 time. It consists of measures 9 through 17. Measure 9 is the start of the second ending. Measure 11 is marked with a square box containing the number '11'. The system ends with a double bar line and repeat dots.

Musical notation for the third system of 'Rudolph the Red-nosed Reindeer' in F major, 4/4 time. It consists of measures 18 and 19. Measure 18 is marked with a square box containing the number '19'. The system concludes with a double bar line and repeat dots.

Trombone Part 3

Christmas Carol Collection #2

$\text{♩} = 120$   
Frosty the Snowman

1. To Coda

Musical notation for the first system of 'Frosty the Snowman' in bass clef, 4/4 time. It consists of measures 1 through 8. The melody is simple, using quarter and eighth notes. A first ending bracket spans measures 7 and 8, ending with a double bar line and repeat dots.

9 2. 11 D.C. al Coda

Musical notation for the second system of 'Frosty the Snowman' in bass clef, 4/4 time. It consists of measures 9 through 18. It begins with a second ending bracket over measures 9-10. Measure 11 is marked with a box containing the number 11. The system concludes with 'D.C. al Coda'.

19 CODA 21

Musical notation for the third system of 'Frosty the Snowman' in bass clef, 4/4 time. It consists of measures 19 through 21. Measure 19 is marked with a box containing the number 19 and the word 'CODA'. Measure 21 is marked with a box containing the number 21. The system ends with a double bar line and repeat dots.

1 Rudolph the Red-nosed Reindeer

1. 1.

Musical notation for the first system of 'Rudolph the Red-nosed Reindeer' in bass clef, 4/4 time. It consists of measures 1 through 8. The melody is in a lower register than the first piece. A first ending bracket spans measures 7 and 8, ending with a double bar line and repeat dots.

9 2. 11

Musical notation for the second system of 'Rudolph the Red-nosed Reindeer' in bass clef, 4/4 time. It consists of measures 9 through 18. It begins with a second ending bracket over measures 9-10. Measure 11 is marked with a box containing the number 11. The system concludes with a double bar line and repeat dots.

18 19

Musical notation for the third system of 'Rudolph the Red-nosed Reindeer' in bass clef, 4/4 time. It consists of measures 19 through 21. Measure 19 is marked with a box containing the number 19. The system ends with a double bar line and repeat dots.

Euphonium Part 4

Christmas Carol Collection #2

Frosty the Snowman

♩=120

To Coda



9

2.

11

D.C. al Coda



19

CODA

21



1

Rudolph the Red-nosed Reindeer

1.



9

2.

11



18

19



Tuba Part 4

# Christmas Carol Collection #2

♩=120

Frosty the Snowman

To Coda 1.



9

2.

11

D.C. al Coda



19

CODA

21



1

Rudolph the Red-nosed Reindeer

1.



9

2.

11



18

19



Bells Part 1

# Christmas Carol Collection #2

Frosty the Snowman

$\text{♩} = 120$

Musical score for "Frosty the Snowman" in 4/4 time. The score consists of three staves. The first staff (measures 1-8) includes the tempo marking  $\text{♩} = 120$  and the instruction "To Coda" with a first ending bracket. The second staff (measures 9-18) includes a second ending bracket and a boxed measure number "11". The third staff (measures 19-20) is labeled "CODA" and includes a boxed measure number "21". The piece concludes with a double bar line and repeat dots.

1 Rudolph the Red-nosed Reindeer

Musical score for "Rudolph the Red-nosed Reindeer" in 4/4 time with a key signature of one flat. The score consists of three staves. The first staff (measures 1-8) includes a first ending bracket. The second staff (measures 9-18) includes a second ending bracket and a boxed measure number "11". The third staff (measures 18-19) includes a boxed measure number "19". The piece concludes with a double bar line and repeat dots.