

# 2023 West Deptford Marching Band Handbook

## Table of Contents

---

<b>Welcome Letter</b>	<b>1</b>
<b>About Competitive Marching Band</b>	<b>2</b>
<b>Recent Competitive History</b>	<b>3</b>
<b>Acceptance into the Eagle Marching Band</b>	<b>4</b>
<b>Rehearsals, Rehearsal Etiquette &amp; Band Camp</b>	<b>4</b>
<b>Pride Initiative</b>	<b>5</b>
<b>Band Uniform Procedures</b>	<b>6</b>
<b>Marching Band Code of Conduct</b>	<b>7</b>
<b>Bus Procedures</b>	<b>7</b>
<b>What Do I Need Every Rehearsal?</b>	<b>8</b>
<b>Rehearsal Etiquette and Procedures</b>	<b>8</b>
<b>Key Marching Band Terms</b>	<b>9</b>
<b>Chain of Command</b>	<b>10</b>
<b>Instrument Care Procedures</b>	<b>10</b>
<b>Band Parents Organization</b>	<b>11</b>
<b>Fundraising</b>	<b>11</b>
<b>Contact Information</b>	<b>12</b>
<b>Closing Remarks</b>	<b>13</b>
<b>Summer Schedule</b>	<b>14</b>
<b>Fall Schedule</b>	<b>15</b>
<b>FORM – Permission to Ride Home with Parent</b>	<b>16</b>
<b>FORM – School Instrument Use Agreement (to be returned by all members using school provided equipment)</b>	<b>17</b>
<b>FORM – Advance Notice of Absence</b>	<b>18</b>
<b>FORM - Student and Parent Acknowledgement Page (to be returned by all members)</b>	<b>19</b>

Welcome To The  
WEST DEPTFORD HIGH SCHOOL  
“EAGLE” MARCHING BAND

The West Deptford “Eagle” Marching Band provides quality educational opportunities for young people in the performing arts. These opportunities occur in an environment which promotes the social and artistic development of the group’s participants through creative programs. These are designed with the highest possible quality of leadership and instruction.

The perennial Drum Corps International World Champion, The Cadets, from Allentown, PA have described the marching activity as “a rare combination of musical entertainment, physical activity, competition, social activities, travel, and fun. It is about learning, coping, and growing. It is an activity in which you can put your talents to the test and push your own limits. The test is the pursuit of excellence, both as an individual and as a member of the team.”

This activity is full of excitement, opportunity, and challenge. It is a unique way of life that requires dedication, endurance, and perseverance. In return it offers opportunities for achievement, expression, and friendship. It is truly the experience of a lifetime.

This guide is designed to tell you about everything you need to know and do while being a member of the Eagle Marching Band and to make your experience in the Eagle Marching Band as enjoyable and educational as possible. It is impossible to be 100% comprehensive when creating a handbook such as this, but this will be a strong foundation for this organization to work from.

**Note:** The director reserves the right to make changes or revisions TO ANY policy or procedure printed in this handbook. In addition, the schedule of dates and times is subject to change.

## **What Is Competitive Marching Band?**

Marching band has evolved into a very intense sport and art form. It makes use of musicians and dancers, where the final product is a combination of music, athletics, and choreography in a competitive arena.

Bands are evaluated in two areas, visual performance, and music performance. Scores are based on preset criteria which consider what the students are given to perform (difficulty/artistry) and how well they perform it (presented skills).

## **Why Do Bands Compete?**

We believe that competition is an integral component of every band program. Competition develops poise, character, discipline, and nurtures the musical development of each individual member. Students engaged in a group endeavor involving competitive performance often learn values such as teamwork and group building, while learning to place the group above themselves. It is our wish to share these ideals with all West Deptford members, our neighboring school districts, and our communities to foster a greater understanding and support for the students in our bands and all of the other performing arts.

## **Who Is Our Competition?**

There are two competitive circuits we participate in. They are the Tournament of Bands (TOB) and the United States Scholastic Bands Association (USSBA). Most bands align themselves in a circuit that best matches their competitive strata. We primarily compete in what we believe is the more challenging and competitive TOB circuit. These are the bands we feel challenge us to be our best.

Marching Bands compete against bands in their appropriate group. A band's group is determined by the number of student participants. We compete in Group II which is for bands with 31-50 musicians. TOB Group Sizes are: Group 1 - up to 30 musicians; Group 2 - 31 to 50 musicians; Group 3 - 51 to 75 musicians; Group 4 - 76 or greater.

## **About Championships**

There are three championship events. They are the TOB Region I Championships, TOB NJ State Championships, and the TOB Atlantic Coast Championships (ACC's). Throughout the fall the band works to strengthen, polish, and enhance the program to prepare for championships. Chapter championships are the local regional championship similar to a varsity sport's state final. The South Jersey area is Region I.

Note: Student who know in advance that they cannot attend a championship event due to personal conflicts will not be able to participate in the competitive field show that season.

## West Deptford High School Marching Band - Competitive History

Under the direction of Mr. Thomas L. Kershaw, Jr.

YEAR	SHOW TITLE	TOB GROUP	CHAPTERS FINISH	ACC FINISH	HIGHEST SCORE
2022	DRAWN IN	II	1	2	96.70
2021	KALEIDOSCOPE	II	1	1	96.20
2020	IN CONCERT	N/A	N/A	N/A	N/A
2019	ELYSIUM	II	1	1	98.70
2018	DISTORTED	II	1	2	97.50
2017	EL CORAZON	II	1	1	97.40
2016	THE NEW WORLD	II	1	1	97.90
2015	TO THE HEAVENS	II	1	1	98.65
2014	ICE-SOLATION	III	1	1	96.75
2013	PARISIAN PORTRAITS	II	2	1	96.90
2012	EXPRESSIONS OF ELEGANCE	II	2	1	97.65
2011	FROM TWILIGHT 'TIL THE DAWN	III	1	1	96.55
2010	DYNASTY – REFLECTIONS OF CHINA	III	1	1	96.95
2009	AMERICAN VOICES	III	1	4	94.20
2008	SEASCAPES	III	1	3	94.70
2007	ON THE EDGE	III	1	3	96.25
2006	NOCTURNAL IMAGES	III	1	2	96.80
2005	TIME	III	2	5	94.65
2004	MASTERS OF MELODY	II	2	6	93.30
2003	SCENES FROM THE RUSSIAN ICE PALACE	II	4	18	90.15
2002	SPANISH FIRE	I	4	19 (TIE)	86.75

## Acceptance Into The Eagle Marching Band

While we do not use any type of formal audition procedure, we ask that you do make certain that you understand the commitment you are making. This is an activity where no one sits the bench. Everyone gets to participate 100% of the time. Consequently, no one can take your place if you cannot make it to a performance. Everyone is an essential component of which the others depend upon to complete the ensemble.

The sections will be solidified in the beginning of August, and it is imperative that you plan to attend all rehearsals and camps. We are looking for people who are not fearful of hard work and will take on the total commitment. The most important attributes we are looking for are attitude, attendance, and the desire to constantly improve.

Note: 8<sup>th</sup> grade musicians may be asked to audition in July. 8<sup>th</sup> grade musicians will need to demonstrate: 1. Skills to successfully contribute musically. (Knowledge of instrument: fingerings, facility) 2. Produce a characteristic tone on your instrument. (Experienced/quality sound)

## Rehearsals, Rehearsal Etiquette & Band Camp

Rehearsals are what will enable the band to succeed. At rehearsals, members will learn and work to perfect the entire show. Music, drill, and color guard work will be taught and improved upon continuously throughout the season.

It is the responsibility of each member to know the rehearsal schedule and do everything he or she must to attend every rehearsal. Students who have jobs must provide their employer with a copy of the band schedule in order to avoid conflicts. Students will not be excused from any performance for work. The schedule for the season is posted on the band's website: <http://www.wdhsmusic.org>.

The rehearsal times listed in the schedule are the times rehearsals begin. This is different than the performance report times (RT) listed in the schedule. All members should have all equipment set up, assembled, and ready to start at the given start time at the given location (band room, practice field, parking lot, etc.). It is your responsibility to know how much time you will need to properly prepare your equipment or other needs in advance of the rehearsal's starting time. This will allow us to be as productive as possible and utilize all our rehearsal time to improve.

If you miss a rehearsal during the week of a performance, whether excused or not, you may not perform that weekend unless cleared by Mr. Kershaw. This is strictly for your safety and the safety of others. Mr. Kershaw will make this decision based upon the degree of changes/additions made to the program that particular week.

As we get into the rehearsals for the season, etiquette for rehearsals will be clearly defined by the staff and student leadership. It is expected that all members will adhere to the defined procedures.

Should a student consistently demonstrate that he or she does not subscribe to the proper conduct at a rehearsal, the band director reserves the right to evaluate the student's performance and decide as to whether the student should perform and/or participate. A single person demonstrating a poor work ethic can prevent the whole group from achieving the absolute most it can.

Band Camp is the most important block of rehearsal time during the entire marching season. This is the time that much of the show is taught, skills are developed, and the group bonds together as a team. Band Camp details will be included in a separate packet dedicated to that event.

# THE PRIDE INITIATIVE



As we continue to build a program that will be self sustaining there are key items success needs to continue. One we believe has the strongest impact is pride. Everyone involved with the WDHS Marching Band from staff & members to our families and friends can help foster our success through their display of PRIDE. Here are some ways we can display our pride for everyone to see.

**Performance through preparation**—Being prepared is the key here. Keeping on schedule through individual practice and preparation. This ensures a strong performance level from all.

**Respect**—Being kind to staff, peers, competitors, and yourself. Treating rehearsal locations, equipment, uniforms with the respect they deserve helps to promote a sense of belonging and personal ownership in our program.

**Integrity**—Being honest with yourself. Are you doing your share? Are you pulling your weight? Are you seeking the information you need to be successful from the people who can provide it?

**Determination**—Personal belief that through appropriate planning and goal setting, anything is possible. Working to achieve our goals. Giving up is not an option, ever.

**Excellence through effort**—Giving your 100% with every task. If you are giving all your effort, nothing more can be asked of you. In the end, your satisfaction with your own results will be dependent upon the amount of effort put into your role.

This season we will be building upon our success through our constant focus on P.R.I.D.E. There are many ways each member will be asked to show their pride. Some include their daily performance, their personal handling of responsibilities from all their activities, and/or personal interactions. This will help us build a lasting impression on our school, community, and activity.

## Band Uniform Procedures

While you are in uniform, you are constantly being observed. Your personal appearance and your actions represent not only you, but also your band, school, and community. The uniform assigned to you is a valuable asset to the band. You will be responsible for its care and maintenance. If something needs to be fixed or adjusted on your uniform, simply report it to a staff member as soon as possible. Your band uniform should be treated with the same consideration given your finest suit or dress.

The Shako (band hat) should always be worn squarely on your head, not tilted back or to one side. The visual judge will base your posture score on your plume's alignment. If the shako is on your head, the strap should be under your chin to ensure a firm fit. It may feel awkward at first, but after some time, this will feel natural. When you are not wearing your Shako, it should be carried the proper way. It should be held squarely in the left hand, with the index and middle fingers and thumb clasped gently on the brim. ALWAYS carry the Shako in this fashion when not wearing it and NEVER wear it indoors. Do not place anything on top of the Shako. It is made of nothing more than reinforced plastic and will crush easily. Your plume is to be returned to the "plume box" at the end of every performance. The plumes are made of delicate feathers and this container ensures they will remain in good condition for many seasons.

The band uniform is to be worn with proper undergarments. All shirts under the jacket MUST be BLACK and HAVE SLEEVES. Sleeveless shirts do not protect the uniform when you begin to perspire. Jeans are never to be worn under the uniform pants; light gym shorts are recommended or thinner athletic style pants in colder weather at the performer's discretion. When in uniform, long black socks are required; mid-calf is a good length. Band shoes are to be kept clean and polished for every performance.

Storing the uniforms is as important as wearing them. Please use two hangers when returning the uniform to its garment bag. Avoid putting the pants and jacket on a single hanger. Wooden or stronger plastic hangers are needed to support the uniforms, wire hangers will buckle under the weight of your uniform, so please do not use them. The garment bags are only to contain your uniform; they are not storage bags for personal belongings. At the end of every show, your garment bag will be checked to make sure the uniform is being taken care of properly so please take the extra few minutes to properly store your equipment.

To maintain a strong, unified appearance, students are required to maintain a clean and professional personal appearance. Individual items such as rings, earrings, unapproved makeup, and "unnatural" hair colors are not allowed in uniform. These items can distract and damage the group's performance intent.

It is the desire of the West Deptford High School Marching Band to continue a tradition of excellence. The way the band presents itself leaves either a positive or negative impression on its audience. The care of the uniform, and each band member's behavior while wearing it, goes far toward creating pride and establishing tradition. It is your duty to take pride in both you and your uniform; the respect you will earn from others, begins with respect in yourself.

## **MARCHING BAND CODE OF CONDUCT**

**All members of the band are responsible for adhering to the code of conduct rules as outlined in the school's student handbook.**

The following is a list of behaviors that should **NEVER** be done at a rehearsal or performance:

1. **SITTING** – Unless you are sitting in a clean, dry chair, on a towel, or on some other protective surface, you should never sit in uniform.
2. **SPITTING, SWEARING, SCREAMING, & OPEN DISPLAYS OF AFFECTION** – These present a poor image of you and the organization. They are, therefore, deemed inappropriate.
3. **RUNNING** – With the exception of performing the show, you should never run in uniform. Not only does it shatter the controlled and dignified image, but you could also be injured and your uniform damaged. Running during a rehearsal IS appropriate and encouraged.
4. **CHEWING GUM** – This is not allowed at any rehearsal or performance.
5. **TALKING ON THE FIELD** - Students should refrain from talking during rehearsals and performances. Talking interferes with other member's instruction.
6. **INDIVIDUAL INSTRUMENT PLAYING** – The band will always play as an ensemble. Individuals are not permitted to play instruments independently during rehearsals or at performances unless given permission to do so.
7. **PLAYING OTHER INSTRUMENTS** – Playing any instrument other than your own is not permitted. This goes for percussion and wind instruments. Everyone is responsible for his or her own instrument and its care.

\*\*\*Eating or drinking, while in uniform, apart from water, is prohibited \*\*\*

### **Bus Procedures**

1. Students will report to their assigned bus in proper dress, as directed. Students must be on time.
2. Backpacks and personal listening devices may be brought at the students' own risk. We will spend long intervals away from the bus and there are, unfortunately, untrustworthy people sometimes lurking about.
3. Students will refrain from talking while roll is taken.
4. Students are to remain in their seat during the entire bus trip.
5. Students will refrain from talking during the last ten-minute period prior to arrival at a competition. The purpose of this is to begin focusing on your individual responsibilities during the show.
6. Upon arrival at all destinations (including WDHS) students should remain seated on the bus, listen for any announcements from the director/staff and then proceed to exit the bus.



## What Do I Need at EVERY Rehearsal?

To ensure optimal success at rehearsals, students should have the following for each West Deptford Marching Band rehearsal:

- Hat or visor; it is important to provide some shade for your face and eyes. This is for your safety and health.
- Appropriate Athletic Clothing; Remember you are going to be moving around for the majority of every rehearsal, come dressed to do so. Gym shorts and t-shirts are great for summer rehearsal. Marching Band is not a fashion event; comfort takes precedence over style.
- Sneakers AND socks must be always worn during rehearsal, REGARDLESS of location or section.
- Water Jug with water. ½ or 1 gallon jugs are great, it is VERY important that you have enough water to make it through every rehearsal and stay hydrated.
- 3 ring, 1 inch binder and sheet protectors. You will keep all your music in these binders to make sure it does not get destroyed and doesn't blow away in the wind.
- Pencil. You will be given A LOT of information and corrections throughout the year, it is important to write it down so that everyone remembers.
- Dot Book, Coordinate sheets and/or drill.
- Instrument AND accessories. Spare reeds, valve oil, screw drivers, etc.
- Most important: *A Great Attitude!!!*

## Rehearsal Etiquette and Procedures

- As a general rule of thumb, students should arrive at least 15 minutes prior to a rehearsal start (i.e. 5:45 for a 6:00 start).
- A lot of equipment, besides your own, must be moved to the rehearsal area. Members are expected to assist one another to ensure rehearsals begin on time. Members are also asked to assist with the return of all equipment to the band room storage areas at the conclusion of all rehearsals.
- Upon arrival, check with section officers for rehearsal locations.
- Students are asked to refrain from talking while instruction/direction is being given by staff members.
- Be an active listener. Don't be the person who is always asking, "What are we doing?" or "What were the directions?"
- Be an active participant. Jump in and do your best every day!

***Be ready to get to work and have fun!!!***

## Key Marching Band Terms

**Set** - “Set” the magical marching band word. Whenever it is uttered, performers immediately stop whatever they are doing and assume a “ready” position. This position will differ in the different rehearsal setting. Regardless of where we are and what we are doing, when you hear “Set”, you must move like “greased lightning.”

**Plus One** - When marching a drill set, performers will always take the first step of the next drill move. This next step is known as the “plus one”. Count one is usually the left foot, but in the case of odd counts it may be the right.

**Check and Adjust** - Upon completion of a drill move, performers must freeze at the “plus one” position until receiving the “check and adjust” command. Once you hear check and adjust, you may consult your coordinate sheets or drill charts and “dress” the form to make sure you are in the correct location. Once you have fixed your spot, you may relax in the rest position (feet together with instrument relaxed in front of the body). Do not talk, but await further correction, or the next set of directions.

**Cover Down** - This is Mr. Dirkes’ favorite phrase and you shall hear it called thousands of times throughout the season. Your “Cover” refers to your position in a line. When “Covering”, you must align your shoulders and spine (visually) with the person in front of you. This will guarantee our lines are nice and straight, and straight lines make us happy. As a general rule, if you can see the person two people in front of you (height not withstanding), the line is not straight.

**Dress** - This does not refer to whether or not you are clothed, but rather your horizontal relationship to the people around you. When asked to “Dress the line” performers should look side-to-side and make sure, once again, your shoulders, and spine are in line with the person next to you. As with a “cover down”, you should only be able to see the body of the person next to you.

**Focalize** - Focalizing is the technique we use to fix curved forms. When asked to do so, performers should “turn in” to the inside of the curved form. With your feet together look at the performers around you and fix your interval and smooth out the curve.

**Interval** - Your interval is the distance between you and the performer nearest to you.

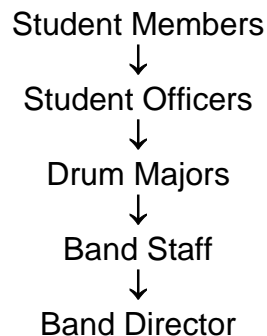
**Minus One** - When preparing to march a drill set, performers will always assume the “Minus One” position. This is the last step of the previous drill set. As count one is usually the left foot, minus one will customarily be the right foot, but not always. DO NOT ARBITRARILY PLACE YOUR FOOT BEHIND YOU. You should always set in the direction you were coming from as to assist your body in the learning process of the changes from set to set.

**Mucking** - “Mucking” is not a real word, we made it up. It is, however, a rehearsal technique that we created and may use. When we “Muck” through sets we put a 8 count halt in between each set during which we use our “Plus One” and “Minus One” technique. If the performers are asked to “Muc” 2 sets of 8, it would occur as follows. March first 8 counts, on count 9 (count 1 of 8 count hold) the performers take “plus one”

and freeze there for counts 2,3, and 4 of the hold, on count 5 of the hold, performers assume the “minus one” position, and hold there for counts 6,7, and 8. The performers will then begin marching the next set of 8 on the following count. The exercise continues the same for as many drill sets as are called for.

## **Chain Of Command**

If you have questions, please ask!!  
Students should follow the chain of command...  
Please do not go straight to the director.



## **Instrument Care Procedures**

You are held personally responsible for the care and maintenance of your instrument (whether school or privately owned). Particular care must be exercised not to leave your instrument unattended. Any instrument not in working condition makes it more difficult to play. All instruments will be checked periodically to see that they are in proper working order. If an instrument must be sent into the shop for repairs, it is the student's responsibility to secure a loaner instrument from the repair shop. The school insurance will not cover any instrument that is privately owned in any circumstance. Insurance for privately owned instruments might be purchased from your own broker - apply for "Amateur Rates", which are considerably lower.

All school owned instruments are to be signed out through the band director (see form on page 17). Instruments are not to be taken from the school's premises until the proper forms have been signed and authorized for use. Repair to school instruments above normal wear and tear will be charged to the student assigned the instrument as outlined on the agreement form.

## **Band Parents Organization**

The parents support group for the Eagle Marching Band is known as the West Deptford Band Parents Association. The Band Parents organization functions as a support group, with elected leadership, to aid in fundraising and many other facets of the Music Program. The Booster Organization supports the concert, marching, and jazz bands.

### **ALL PARENTS ARE INVITED AND ENCOURAGED TO BECOME ACTIVE MEMBERS OF THE ORGANIZATION.**

The WEST DEPTFORD BAND PARENTS ORGANIZATION meets the first Monday of each month at 8:00 PM in the High School Band Room.  
PLEASE JOIN US!

#### **Tentative 2023-24 Band Parents Meeting Schedule:**

August 7	November 6	February 5	May 6
September 11	December 4	March 4	June 3
October 2	January 8	April 8	July – No Meeting

## **Fundraising**

Throughout the year the band, band parents or choir parents organizations may provide students with opportunities to earn fundraising credits to help offset costs associated with their involvement. Each fundraiser has a designation as to where the funds will be credited. Some fundraisers are intended to cover the organizational costs of scholarships, clinicians, needed equipment, etc. Other fundraisers will provide individuals with available funds to help with individual expenses. Both types of fundraisers are important to the health of our organizations. In either circumstance, all funds raised through the band, band parents or choir parents organizations are the sole property of that organization.

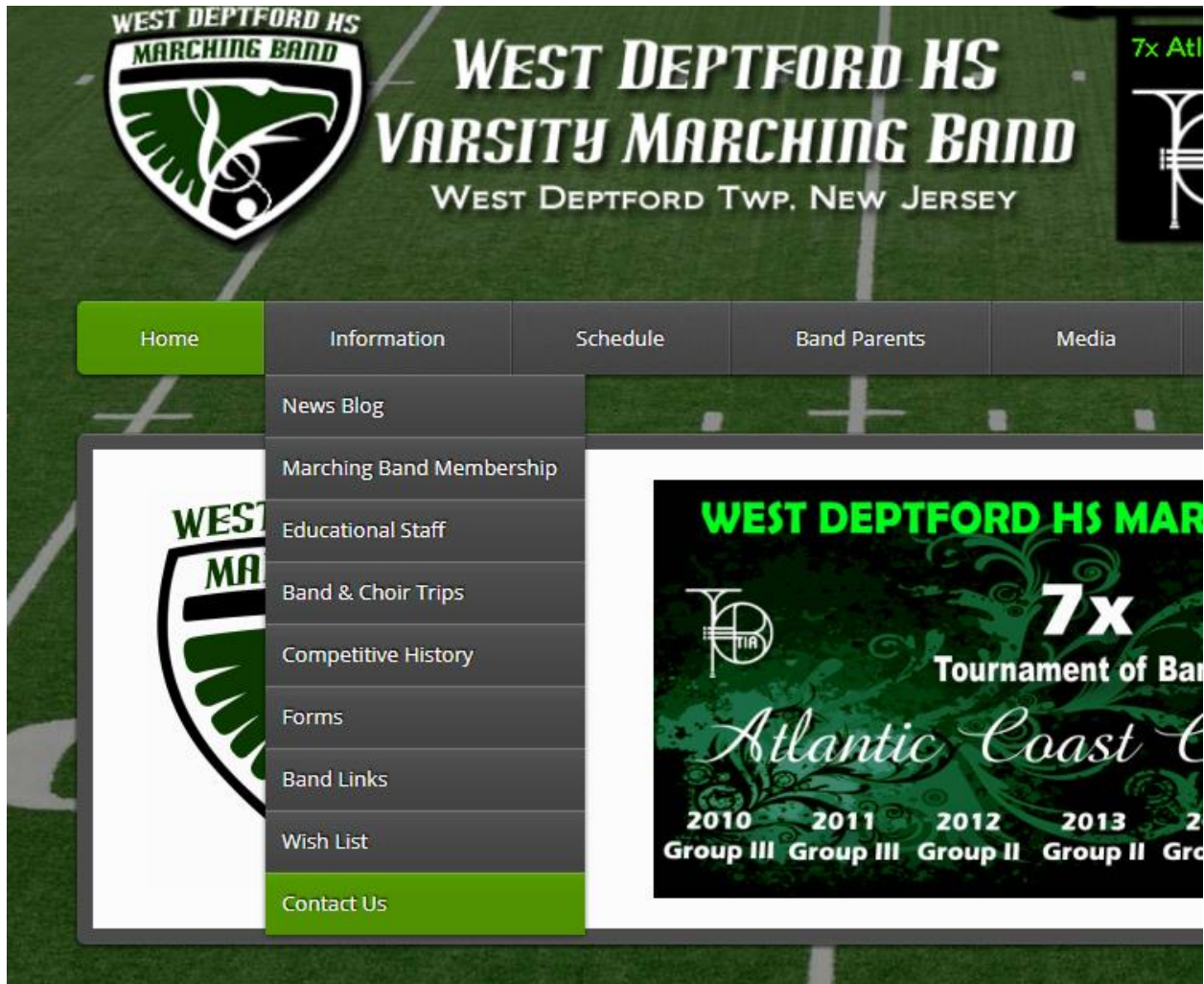
About individual student credits:

- As a courtesy, our music organizations allow individuals to earn fundraising credits. All fundraisers are optional.
- Fundraising credits earned through band/choir fundraisers may only be applied to band/choir expenses.
- Graduating seniors with individual account balances will have their balance returned to the primary organization's general fund account at the close of their senior year.
- Graduating seniors may request that their account balance be transferred to their younger sibling's band/choir account only. No other relations will be allowed.

## Contact Information

Thomas Kershaw, Jr.	Marching Band Director
School Phone:	(856) 848-6110 (x2051)
Email Address:	mrkershaw@comcast.net

You can also use the contact form on the band's web site.



Our web site:  
[www.wdhsmusic.org](http://www.wdhsmusic.org)



## **Closing Remarks**

You are beginning an incredible experience! Have a great time! You will face many challenges. Embrace them. Your hard work, sweat, dedication, commitment, and heart will make the Eagle Marching Band a tremendous success! With the guidance and help of the instructional staff, support staff and each other, you will be able to make this year more than you ever thought possible.

We believe that marching band is a youth activity and not a full-time job. Members do not do this as a profession. We do, however, expect a commitment. You will have to work hard and give everything you can, but the pay off in the end will be worth more than all of your time and effort.

Our band is a family, and you will make many new, lasting friendships during your time with us. You will, undoubtedly, experience moments of sheer adrenaline that cannot be encountered anywhere else. You will also receive an education. Your area of talent will improve, as well as talents you never knew you had. We have a very talented instructional staff. Use them. They will be your best resource for success as they know how to achieve it. Always remember that everything asked of you is done to improve the program and help you grow into an extraordinary performer.

It is nearly impossible to put into words everything that it is to be a member of the West Deptford Eagle Marching Band. Hopefully, this guide will help everyone form one united method and get everyone on the same page. The sooner you understand what is happening and why, the sooner you will truly be able to reap the benefits of your hard work and devotion. We urge you to put everything you have into your membership in the Eagle Marching Band and you will be amazed what you receive in return.

# **HAVE A GREAT YEAR!**

# **WDHS Marching Band 2023 SUMMER SCHEDULE**

**July & August**

**Tue. July 11 6pm-9pm at Oakview  
Wed. July 12 6pm-9pm at Oakview**

**Tue. July 18 6pm-9pm at Oakview  
Wed. July 19 6pm-9pm at Oakview**

**Tue. July 25 6pm-9pm at Oakview  
Wed. July 26 6pm-9pm at Oakview**

**Tue. August 1 6pm-9pm at Oakview  
Thu. August 3 6pm-9pm at Oakview**

## **MINI CAMP #1**

**August 8th-10th at Oakview 3p-9p**

## **Band Camp**

**August 13th-17th at Camp Ramblewood**

## **MINI CAMP #2**

**August 22th-24th at WDHS 3p-9p**

**Tue. August 29 6pm-9pm at WDHS  
Wed. August 30 6pm-9pm at WDHS  
Thu. August 31 6pm-9pm at WDHS  
Fri. Sept 1 - FB Game (A) 10:30am**

**COMPLETE AND CURRENT SCHEDULE INFORMATION CAN BE  
FOUND ON THE BAND'S WEB SITE:**

**<http://www.wdhsmusic.org>**

# WDHS Marching Band 2023 FALL SCHEDULE

Updated on 7/11/23 – subject to change

Refer to <https://www.wdhsmusic.org/schedule.html> for the most accurate information.

Date	Time	Activity	Location
Tue. 9/5	6:00pm – 9:00pm	Rehearsal	WDHS
Wed. 9/6	6:00pm – 9:00pm	Rehearsal	WDHS
Thu. 9/7	6:00pm – 9:00pm	Rehearsal	WDHS
Fri. 9/8	5:00pm – 10:00pm	Football Game (A) Camden Catholic	Camden Catholic HS
Tue. 9/12	6:00pm – 9:00pm	Rehearsal	WDHS
Wed. 9/13	6:00pm – 9:00pm	Rehearsal	WDHS
Thu. 9/14	6:00pm – 9:00pm	Rehearsal	WDHS
Fri. 9/15	5:00pm – 10:00pm	Football Game (H) Camden	WDHS
<b>Sat. 9/16</b>	<b>12:00pm – 10:00pm</b>	<b>Competition Performance</b>	<b>Williamstown HS</b>
Tue. 9/19	6:00pm – 9:00pm	Rehearsal	WDHS
Wed. 9/20	6:00pm – 9:00pm	Rehearsal	WDHS
Thu. 9/21	6:00pm – 9:00pm	Rehearsal	WDHS
Fri. 9/22	5:00pm – 10:00pm	Football Game (H) Paulsboro	WDHS
<b>Sat. 9/23</b>	<b>12:00pm – 10:00pm</b>	<b>Competition Performance</b>	<b>Washington Twp. HS</b>
Tue. 9/26	6:00pm – 9:00pm	Rehearsal	WDHS
Wed. 9/27	6:00pm – 9:00pm	Rehearsal	WDHS
Wed. 9/28	6:00pm – 9:00pm	Rehearsal	WDHS
Fri. 9/29	6:00pm – 9:00pm	Football Game (A) Haddonfield	Haddonfield HS
<b>Sat. 9/30</b>	<b>12:00pm – 10:00pm</b>	<b>Competition Performance</b>	<b>Gateway Regional HS</b>
Tue. 10/3	6:00pm – 9:00pm	Rehearsal	WDHS
Wed. 10/4	6:00pm – 9:00pm	Rehearsal	WDHS
Thu. 10/5	6:00pm – 9:00pm	Rehearsal	WDHS
Fri. 10/6	5:00pm – 10:00pm	Football Game (H) Sterling	WDHS
<b>Sat. 10/7</b>	<b>12:00pm – 10:00pm</b>	<b>Competition Performance</b>	<b>Millville HS</b>
<b>Sun. 10/8</b>	<b>10:00am – 6:00pm</b>	<b>Competition Performance</b>	<b>John F Kennedy HS</b>
Tue. 10/10	6:00pm – 9:00pm	Rehearsal	WDHS
Wed. 10/11	6:00pm – 9:00pm	Rehearsal	WDHS
Fri. 10/13	5:00pm – 9:00pm	Rehearsal	WDHS
<b>Sat. 10/14</b>	<b>12:00pm – 10:00pm</b>	<b>HOME SHOW COMPETITION</b>	<b>WDHS</b>
<b>Sun. 10/15</b>	<b>10:00am – 6:00pm</b>	<b>Competition Performance</b>	<b>Deptford HS</b>
Tue. 10/17	6:00pm – 9:00pm	Rehearsal	WDHS
Wed. 10/18	6:00pm – 9:00pm	Rehearsal	WDHS
Fri. 10/20	6:00pm – 9:00pm	Rehearsal	WDHS
Sat. 10/21	10:00am-2:00pm	Football Game (A) Haddon Heights	Haddon Hts HS
Sat. 10/21	10:00am-2:00pm	Championship Rehearsal	WDHS
<b>Sun. 10/22</b>	<b>ALL DAY</b>	<b>TOB SJ Regional Championship</b>	<b>Eastern Regional HS</b>
Tue. 10/24	6:00pm – 9:00pm	Rehearsal	WDHS
Wed. 10/25	6:00pm – 9:00pm	Rehearsal	WDHS
Thu. 10/26	6:00pm – 9:00pm	Rehearsal	WDHS
Fri. 10/26	TBD	Football Playoff Round 1 - TBD	TBD
<b>Sat. 10/28</b>	<b>ALL DAY</b>	<b>TOB – NJ State Championships</b>	<b>Barneget HS</b>
Wed. 11/1	6:00pm – 9:00pm	Rehearsal	WDHS
Thu. 11/2	6:00pm – 9:00pm	Rehearsal	WDHS
Fri. 11/3	6:00pm – 9:00pm	Rehearsal	WDHS
<b>Sat 11/4 or Sun. 11/5</b>	<b>ALL DAY</b>	<b>TOB - Atlantic Coast Championships</b>	<b>Hershey, PA</b>
Wed. 11/8	6:00pm – 9:00pm	Recording Rehearsal	WDHS
Tue. 11/14	8:00am – 10:00am	Middle School Performance	WDMS
Wed. 11/15	6:00pm – 9:00pm	Parade Rehearsal 1	WDHS
Tue. 11/20	8:00am – 10:00am	Middle School Performance	WDMS
Wed. 11/29	6:00pm – 8:00pm	Parade Rehearsal 2	WDHS
Sat. 12/2	TBA	Performance - Christmas Parades	Salem, NJ & West Cape May, NJ





West Deptford High School  
1600 Old Crown Point Road  
Westville, NJ 08093  
Phone: (856) 848-6110  
Fax: (856) 845-5774  
www.wdhsmusic.org

---

---

*Department of Visual and Performing Arts*  
*Mr. Thomas Kershaw Jr. – Director of Instrumental Music*

---

---

Students may be given permission to ride home with their own parent/guardian when special circumstances arise. All that is needed is to have this form filled out and returned to Mr. Kershaw prior to the date of the trip. We ask that these requests be reserved for special occasions only.

**Note - Students will not be given permission to ride home from a trip destination with another student's parent or another student.**

---

**Permission To Ride Home With Parent**

As parent/guardian, I will be driving \_\_\_\_\_  
(student's name)

home from \_\_\_\_\_ on \_\_\_\_/\_\_\_\_/\_\_\_\_\_.  
(location of event) (date of event)

I understand that the following details will need to be handled by the student prior to being dismissed from the group:

- Student will make all necessary arrangements for all of the student's equipment to be properly cared for by another member or volunteer.
- Student will make all necessary arrangements for all normally collected uniform parts to be returned or cared for by another member or volunteer.
- Student will ensure that their area of the bus is clean and neat.
- For safety reasons, the student **and** parent/guardian must check in with the director or a marching band staff member before departing. We will not release any child to "meet" their parent anywhere at anytime.
- Student understands that they will be responsible for all information given to the group.

Parent/Guardian Signature: \_\_\_\_\_

Date submitted: \_\_\_\_/\_\_\_\_/\_\_\_\_



**West Deptford High School**  
1600 Old Crown Point Road  
Westville, NJ 08093  
**Phone: (856) 848-6110**  
**Fax: (856) 845-5774**  
[www.wdhsmusic.org](http://www.wdhsmusic.org)

---

---

*Department of Visual and Performing Arts*  
*Mr. Thomas Kershaw Jr. – Director of Instrumental Music*

---

---

### **Musical Instrument Loan Agreement**

This certifies that \_\_\_\_\_ has been given the below listed  
(student's name)  
instrument for their exclusive use beginning on \_\_\_\_\_. The below  
(date)  
listed instrument is the property of West Deptford High School and is loaned in  
good faith under the following conditions:

- Any damage or malfunction will be reported immediately to the director.
- Any damage to the instrument beyond normal wear and tear will be repaired at the student's expense.
- No other student will be permitted to handle or use the loaned instrument without the consent of the director.
- The instrument and accessories will be returned immediately upon the request of the director or proper school officials.

Instrument Information:

Instrument: \_\_\_\_\_ Make/Manufacturer: \_\_\_\_\_

Factory Serial #: \_\_\_\_\_ Case No: \_\_\_\_\_

Condition: \_\_\_\_\_ Value: \_\_\_\_\_

---

I, \_\_\_\_\_ agree to the conditions outlined above and  
(student's name)  
will handle this valuable equipment with the proper care it deserves.

Student's Signature: \_\_\_\_\_ Date: \_\_\_\_\_

Parent/Guardian's Signature: \_\_\_\_\_ Date: \_\_\_\_\_

Director's Signature: \_\_\_\_\_ Date: \_\_\_\_\_



West Deptford High School  
1600 Old Crown Point Road  
Westville, NJ 08093  
Phone: (856) 848-6110  
Fax: (856) 845-5774  
www.wdhsmusic.org

---

---

*Department of Visual and Performing Arts*  
*Mr. Thomas Kershaw Jr. – Director of Instrumental Music*

---

---

**Advance Notice of Absence**  
(to be submitted by August 10, 2023)

This form is intended for use by persons who have planned vacations, events such as weddings, and other MAJOR conflicts which cannot be resolved. It is expected that all students do everything possible to attend all marching band events and activities and schedule other activities around the band's schedule when possible.

Student's Name: \_\_\_\_\_ Date Submitted: \_\_\_\_\_

**Performance conflicts:**

Date: \_\_\_\_\_ Band's Scheduled Event: \_\_\_\_\_

Reason for Absence: \_\_\_\_\_

Date: \_\_\_\_\_ Band's Scheduled Event : \_\_\_\_\_

Reason for Absence: \_\_\_\_\_

Date: \_\_\_\_\_ Band's Scheduled Event: \_\_\_\_\_

Reason for Absence: \_\_\_\_\_

**Rehearsal conflicts:**

Date: \_\_\_\_\_ Reason for Absence: \_\_\_\_\_

Date: \_\_\_\_\_ Reason for Absence: \_\_\_\_\_

Date: \_\_\_\_\_ Reason for Absence: \_\_\_\_\_

Date: \_\_\_\_\_ Reason for Absence: \_\_\_\_\_



West Deptford High School  
1600 Old Crown Point Road  
Westville, NJ 08093  
Phone: (856) 848-6110  
Fax: (856) 845-5774  
www.wdhsmusic.org

---

---

*Department of Visual and Performing Arts*  
*Mr. Thomas Kershaw Jr. – Director of Instrumental Music*

---

---

### **Student Acknowledgment**

I, \_\_\_\_\_ have read the provided guide and will do my best to adhere to the procedures and behaviors contained within the guide. I understand that the West Deptford Marching Band has an outstanding reputation and my actions during rehearsals and performances are a reflection on the entire organization. I will do my best to continue and strengthen the proud reputation this organization has developed.

Student's Signature: \_\_\_\_\_ Date: \_\_\_\_\_

### **Parent/Guardian Acknowledgment**

I, \_\_\_\_\_ have read the provided guide and will do my best to assist my child to adhere to the procedures and behaviors contained within the guide. I understand that the West Deptford Marching Band has an outstanding reputation and my child's actions during rehearsals and performances are a reflection on the entire organization. I will do my best to help my child continue and strengthen the proud reputation this organization has developed.

Parent/Guardian's Signature: \_\_\_\_\_ Date: \_\_\_\_\_

Please return this page to the director as soon as possible.  
Thank you for your commitment to our proud program.